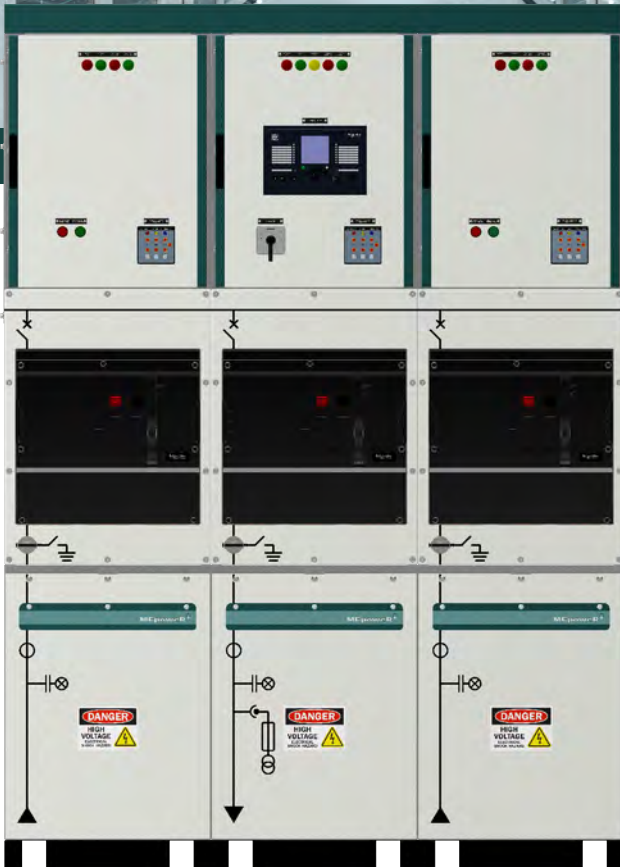




MEpower⁺ RMU-11KV



Green Concept

- MEPower+ is comprehensive range of 11KV and 33KV MV switchboards for Industrial and Buildings Applications
- Type tested in accordance with IEC 62271 -200
- **Ring Main Unit (RMU)**
 - For installations having multiple transformers
 - Ensure continuity of power to your installations
 - Same foot print as conventional SF6 based RMUs
 - Eliminates special care needed for SF6 RMUs
 - Flexible and many more advantages

MEpower⁺

RMU-11KV



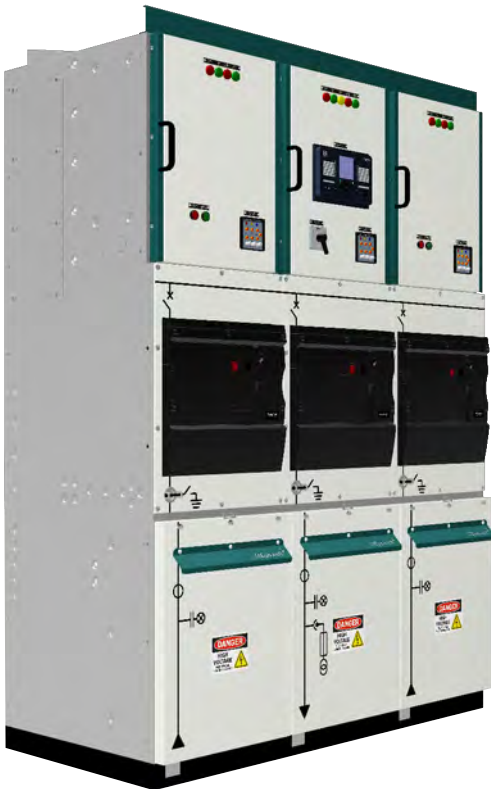
Advantages

Equivalent foot print as
of SF6 RMU

Top or Bottom
cable entry

Possible to terminate
large cables

Maintenance and replacement
of all inner parts possible



Optional Features

- Mix of draw-out and fixed Circuit Breakers
- Integration of additional protections & Meters
- Fault Passage indications, VPIs
- Protection relays including REF
- Connectivity Solutions MEConnect or other automation solutions
- Seamless integration with Other MePower MV Boards
- Eliminates special care needed for SF6 RMUs

Marine Electricals (India) Limited

B-1, Udyog Sadan-3, MIDC, Marol Andheri (East), Mumbai - 400 093

Tel: +91 22 40334300 Email : info@marineelectricals.com

Website : www.marineelectricals.com

Follow Us on

